

Please read and understand the requirements before proceeding.

CAUTION

DO NOT ATTEMPT TO DEFEAT THE SAFETY SWITCH. DO NOT ATTEMPT TO ENERGIZE LAMP(S) OUTSIDE OF THE PROTECTED AIR DUCT AND UNTIL INSTALLATION IS COMPLETE.

NOTE: UV MAY DETERIORATE SOME PLASTICS OVER TIME. SHIELD PLASTICS WITH ALUMINUM TAPE TO PROTECT PLASTICS FROM DIRECT UV EXPOSURE, OR, LOCATE THE UV DEVICE IN A POSITION THAT DOES NOT EXPOSE PLASTICS TO DIRECT UV ENERGY. DO NOT ALLOW DIRECT EXPOSURE OF UV LIGHT ON FLEXIBLE AIR DUCT OR ELECTROSTATIC FILTERS (UNLESS APPROVED FOR UV EXPOSURE).



DO NOT HAVE UNIT POWER ON OR PLUGGED IN UNTIL INSTALLATION IS COMPLETE.

If not familiar with HVAC systems, contact a local HVAC professional to install this device. For an existing A/C system, it is good practice to first clean off the existing residue on the A/C coil with an approved method from the manufacturer.

1. Locate an area on the air-supply plenum, A/C coil housing, or duct wall that will accommodate the UV unit. If possible, install UV unit in near proximity (within 3') to A/C coil, positioned so that UV energy can bathe both sides of the 'A' above the vertex and downstream of coil. (UV device can be mounted in any position, i.e. facing left / right / upside-down, etc.)
Note: If installing on duct board, follow the duct board-mounting instructions on page 3.
2. For plug-in installation, locate (or have installed) a grounded 120V receptacle within 8' of the mounting location. For hard-wire installation, this unit features a self-regulating ballast and can be hard-wired into any electrical power source from 110V to 250V. Seek professional electrical help if not familiar with hard-wiring methods.
3. Verify at least 17" of 'depth' clearance inside the duct to accommodate the length of the 16" lamp.
4. Use the mounting plate as a template to position the UV device, and mark the large installation hole.
5. Cut out the marked hole with tin snips, or use a 3½" to 4" (minimum - maximum) hole saw.
6. Note the position of the safety switch 'pin' on the mounting plate (~ 2 o'clock). Use the 4 self-drilling screws provided to attach the mounting plate to the duct wall, positioning the safety switch 'pin' at the 2 o'clock position on the UV device. If installing optional GPCO grid, insert the cylinder grid through the 3½" openings on the mounting plate and through the duct plenum installation hole before fastening.
7. For duct board installation, use the duct board installation brackets provided. Place the brackets inside the duct board through the installation hole, and align the self-drilling screws with the holes in the duct board-mounting brackets. Do not over-tighten. Over-tightening screws will collapse the duct board.
8. Ensure that the external toggle switch on the bottom of the unit is to the "OFF" position.
9. Wear the cotton gloves provided to remove the UV lamp from the carton. Hold the lamp at a 45° angle, and

align the 4 pins on the lamp with the 4 holes on the base socket. Install the lamp with a “snap-down” action as shown in the drawing on the last page. Insert the ‘installed’ lamp through the 3½” opening in the mounting plate.

Look through the view port to ensure that the lamp is energized.

MAINTENANCE

10. Align the holes on the UV unit with the threaded studs on the mounting plate. Fasten the UV unit to the mounting plate studs with the 4 wing nuts provided. Plug in the unit or activate the disconnect switch for hard wire, and turn the toggle switch to the “ON” position on the unit.
11. **IMPORTANT:** Read and note the UV precautions included on the installation drawing on the last page.
12. Replace the lamp annually (after disconnecting power) by removing the 4 wing nuts and pulling the UV unit straight out from the mounting plate to avoid lamp breakage. Remove the lamp by carefully lifting upwards on the lamp body until the ‘snap’ releases at an approximate 45° angle. Wrap the lamp in newspaper, and dispose according to local disposal laws (similar to compact fluorescent lamps). Install new lamp by following steps 8 through 11 above.

Installing the GL-136



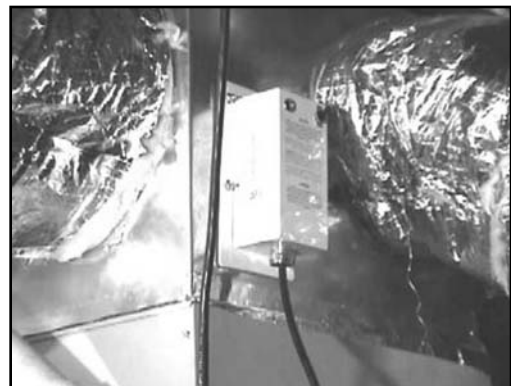
1. Use mounting plate to check for clearance. Mark plate hole, then cut a 3½” hole into the plenum downstream of the A/C coils.



2. Install mounting plate over the opening. GL136 can be mounted in any rotational direction, as long as safety switch pin is aligned with hole in unit (2 o'clock shown here).



3. Install lamp into device, then insert device (with lamp through hole) onto mounting plate. **Note:** If installing GPCO grid, insert GPCO through mounting plate before lamp and unit.

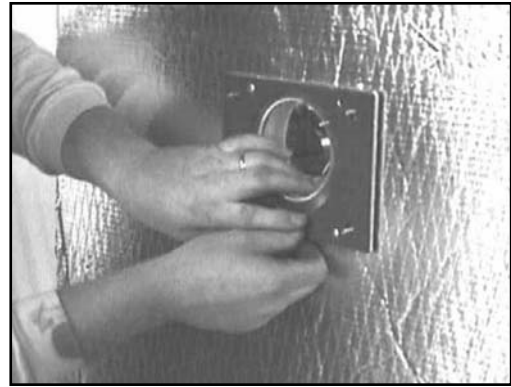


4. Tighten 4 wing nuts. Power up the unit, and turn toggle switch to “ON.”

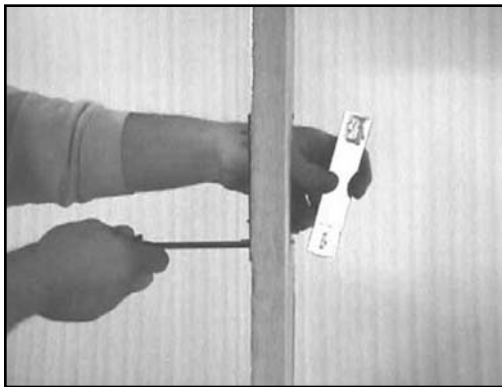
Installing the GL-136 into Duct Board



1. Use mounting plate to check for clearance. Mark plate hole, then cut a 3½" hole into the plenum downstream of the A/C coils.



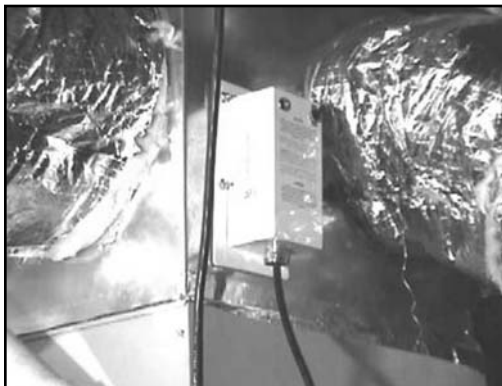
2. Install mounting plate over the opening. GL136 can be mounted in any rotational direction, as long as safety switch pin is aligned with hole in unit (2 o'clock position shown here).



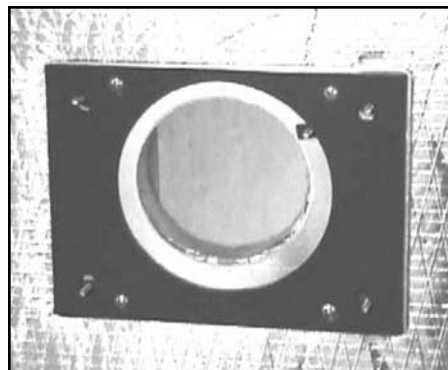
3. Reach through the 3½" opening, and install the mounting plate behind duct board, using self-tapping screws provided.



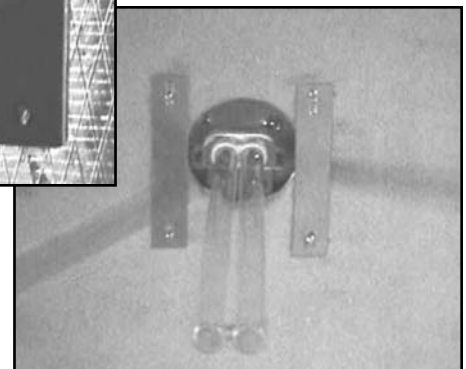
4. Install lamp into device, then insert device (with lamp through hole) onto mounting plate. **Note:** If installing GPCO grid, insert GPCO through mounting plate before lamp and unit.



5. Tighten 4 wing nuts. Power up the unit and turn toggle switch to "ON."

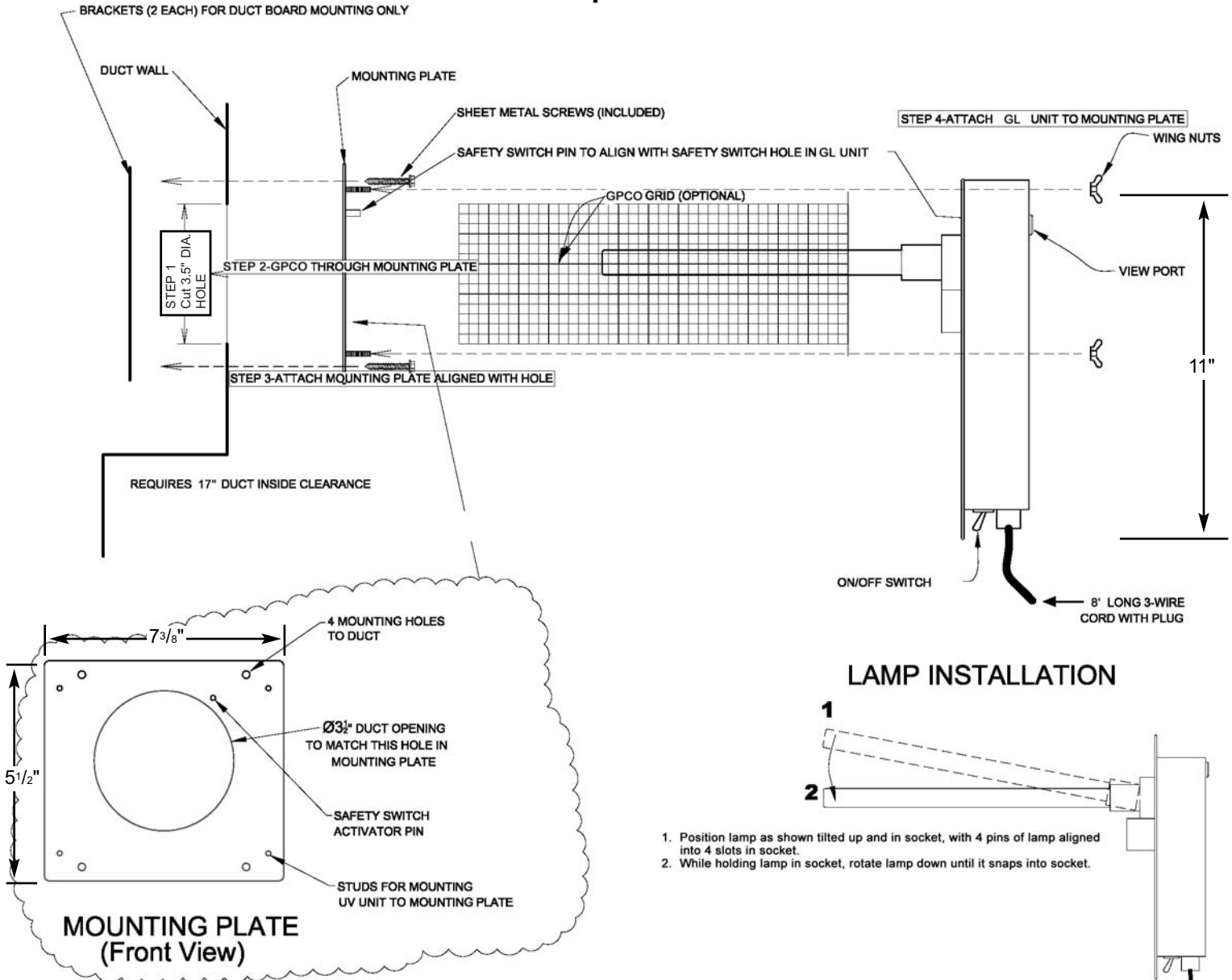


Outside view of duct board with GL136 mounting plate installed

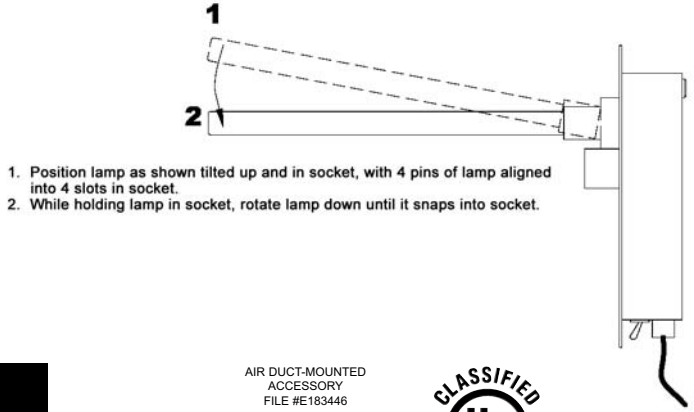


Inside view of duct board with duct board mounting plates installed and UV unit in place

GL-136 with Optional GPCO Grid



LAMP INSTALLATION



1. Position lamp as shown tilted up and in socket, with 4 pins of lamp aligned into 4 slots in socket.
2. While holding lamp in socket, rotate lamp down until it snaps into socket.

AIR DUCT-MOUNTED
ACCESSORY
FILE #E183446

The health aspects associated with the use of this product and its ability to aid in disinfection of environmental air have not been investigated by UL.



RISK OF EXPOSURE TO EXCESSIVE ULTRAVIOLET RADIATION:
DO NOT operate without complete lamp enclosure in place or if glass lens is broken.

WARNING
Eye damage may result from directly viewing the light produced by these lamps. To reduce the risk of exposure to UV radiation, take UV protection measures for personnel during servicing.

WARNING
Do not mount in direct line of sight of openings in the duct or of any access panels of a product connected to the duct.

WARNING
Do not mount in direct line of sight of adjacent wiring or nonmetallic materials.



5030 Corporate Exchange Blvd. SE 800.433.6341 p
Grand Rapids, MI 49512 616.656.8200 p
www.smartairandenergy.com 800.223.8461 f
616.656.6399 f